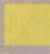


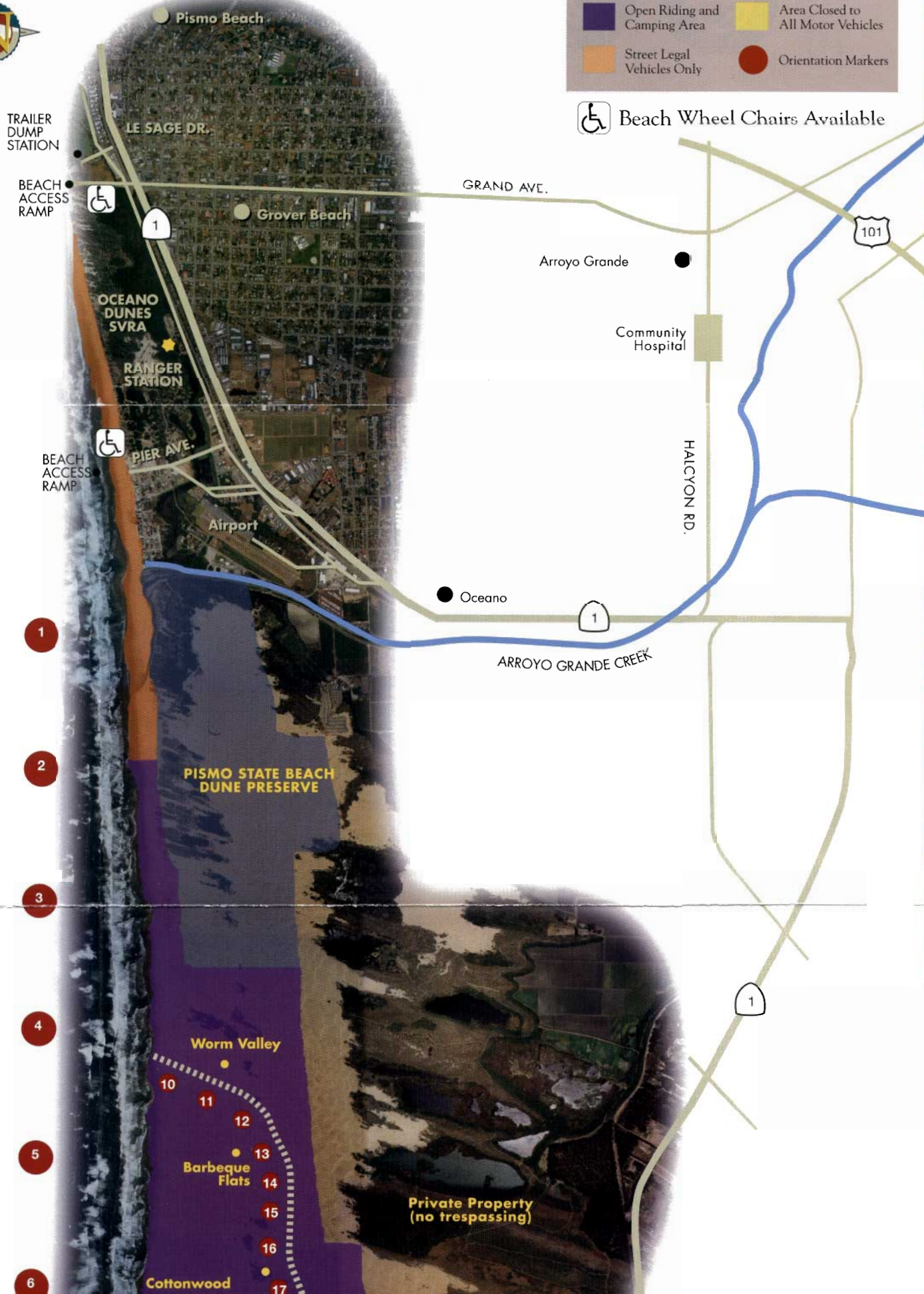
	Open Riding and Camping Area		Area Closed to All Motor Vehicles
	Street Legal Vehicles Only		Orientation Markers

 Beach Wheel Chairs Available



1

2

3

4

5

6

10

11

12

13

14

15

16

17

101

1

1

PISMO STATE BEACH DUNE PRESERVE

Worm Valley

Barbeque Flats

Cottonwood

Private Property (no trespassing)

TRAILER DUMP STATION

BEACH ACCESS RAMP

OCEANO DUNES SVRA

RANGER STATION

BEACH ACCESS RAMP

PIER AVE.

Airport

GRAND AVE.

Arroyo Grande

Community Hospital

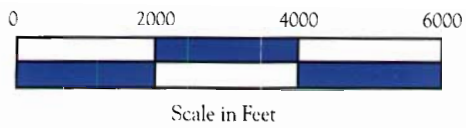
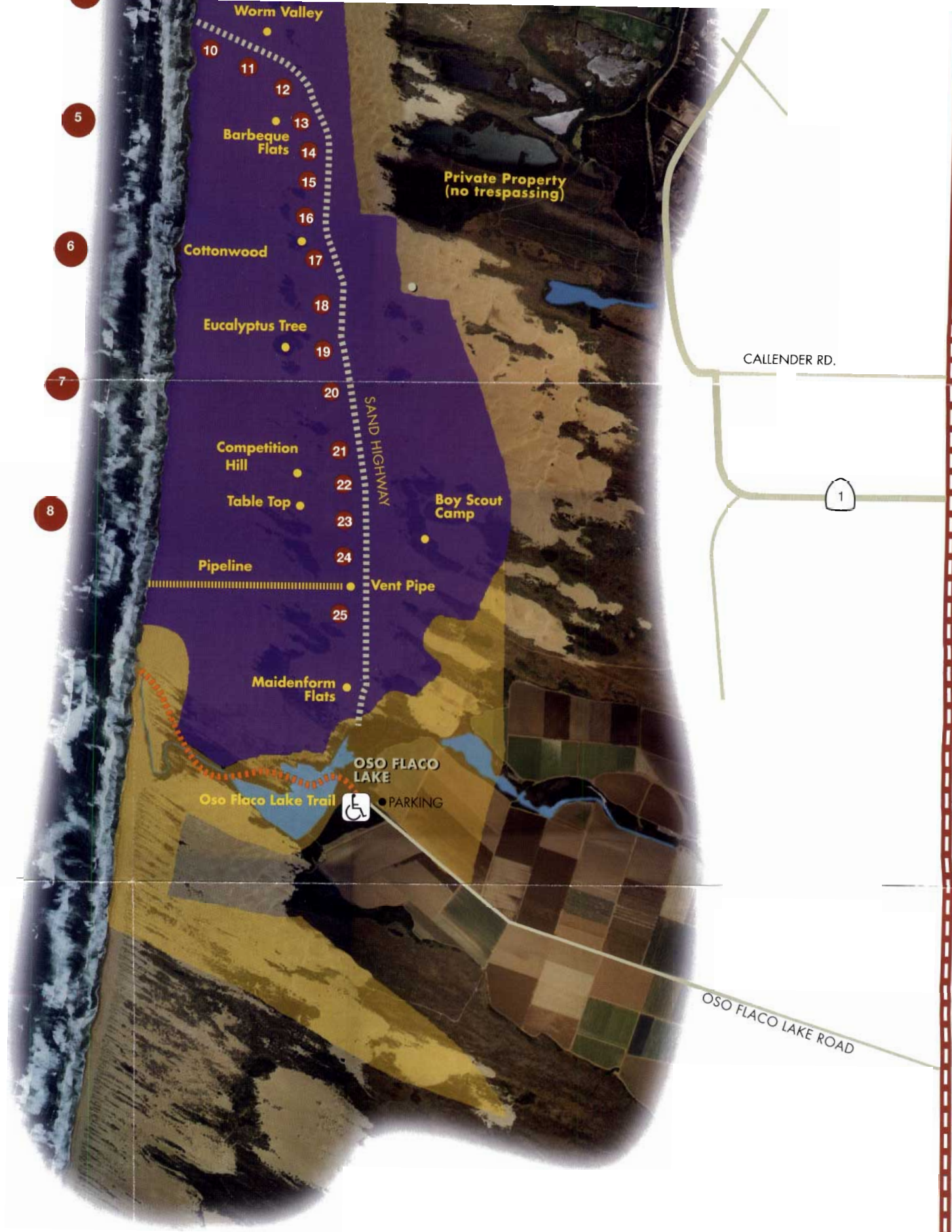
HALCYON RD.

Oceano

ARROYO GRANDE CREEK

Pismo Beach

Grover Beach

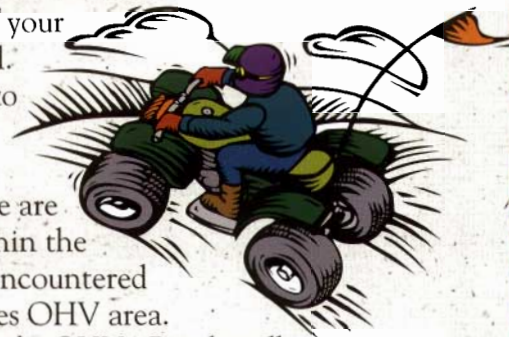


Scale in Feet



SAFETY TIPS

- It is recommended that all ATV operators take part in a safety training course in order to learn the unique handling and operational characteristics of these machines. Course information is available from ATV dealers.
- Responsible riding involves wearing safety apparel when operating a motorcycle or ATV. Wearing helmets, chest protectors, gloves, goggles and over the ankle boots greatly reduce your risk of injury. Helmets are required for all ATV operators.
- Start out slowly when riding in the dunes. Learn the terrain and become able to recognize slipfaces, steep cliff-like slopes on the dunes. Be especially cautious when riding inland from the beach because slipfaces normally face to the east and are often not apparent or visible except from the top of the dune.
- Inexperienced drivers should thoroughly familiarize themselves with all vehicle controls before starting out. Drivers are required to be able to reach and operate all vehicle controls.
- Drive within the capabilities of your vehicle and your own skill level. When in doubt, take the time to look the situation over before proceeding.
- Watch for other vehicles. There are no designated travel routes within the dunes. Other vehicles may be encountered anywhere within the open dunes OHV area.
- The beach is not used exclusively by OHVs. Beach walkers, joggers, equestrians, anglers, and campers share this space along with many species of wildlife. Demonstrating courtesy in honoring the right of way for other beach users makes the park experience most enjoyable for everyone.



EQUIPMENT REQUIREMENTS

All OHVs operating in the recreation area south of Post 2, both on the beach and in the dunes, must be equipped with the following:

- An adequate muffler.
- An 8' upright whip with an orange or red flag attached to the top must be mounted on all motorcycles, ATVs, dune buggies and other vehicles not equipped for highway use. While not required on highway licensed and equipped vehicles, whips and flags are still recommended as a safety measure to increase the visibility of vehicles in the dunes.
- The use of lap belts, or lap belt/shoulder restraints, is required for all drivers and passengers except for operators of two, three and four-wheeled cycles (ATVs).

- on the beach and in the dunes, must be equipped with the following:
- An adequate muffler.
 - An 8' upright whip with an orange or red flag attached to the top must be mounted on all motorcycles, ATVs, dune buggies and other vehicles not equipped for highway use. While not required on highway licensed and equipped vehicles, whips and flags are still recommended as a safety measure to increase the visibility of vehicles in the dunes.
 - The use of lap belts, or lap belt/shoulder restraints, is required for all drivers and passengers except for operators of two, three and four-wheeled cycles (ATVs).

HOW TO GET HELP

- Contact any park employee—All recreation area staff members are prepared to offer help and information to visitors.
- On major holiday weekends a mobile ranger station is located on the beach near Post 4 at the entrance to Sand Highway. Ranger staff or members of the San Luis Obispo County Sheriff Department Search and Rescue Unit are normally available at this location 24 hours daily during these holiday weekends.
- To report **EMERGENCIAS** by telephone—**Dial 911**

Cell phone 911 calls will be answered by the California Highway Patrol. Be sure to tell the operator that you are calling from Oceano Dunes State Vehicular Recreation Area, in addition to providing them with other information about the emergency.

Emergency Call Boxes are located close to Posts 2 and 4 near the beach. 911 calls from these phones will be answered by the California State Parks Communications Center.

In person—Contact any park employee. Park employees will obtain the appropriate fire, law enforcement or medical assistance by radio.

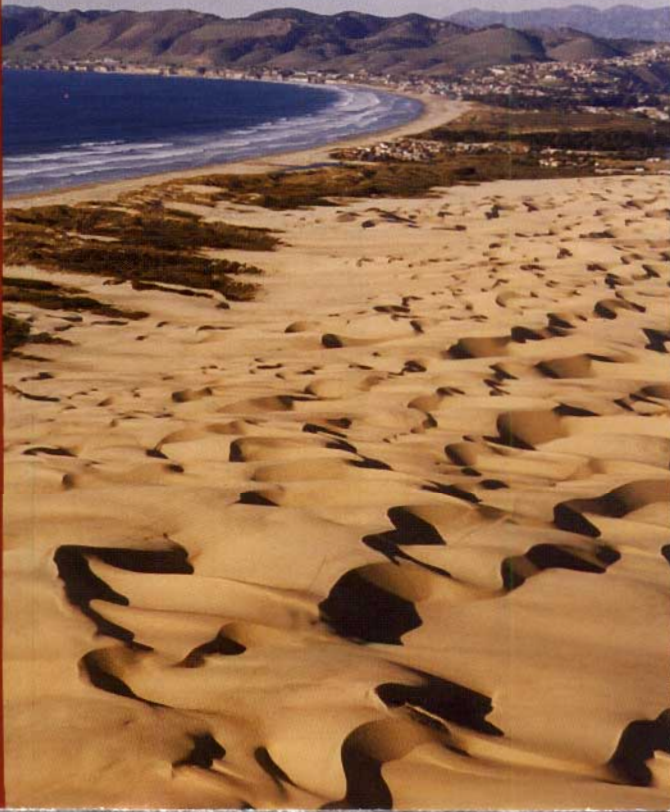


California State Parks does not discriminate against persons with disabilities. Prior to arrival, visitors with disabilities who need assistance should contact the Oceano Dunes Ranger Station, (805) 473-7220.

To use the California Relay Service with TTY, call (888) 877-5378 or without TTY, call (888) 877-5379.

This publication is available in alternate formats by contacting the Oceano Dunes Ranger Station, (805) 473-7220.

Beach wheel chairs are available for loan at both beach entrance ramps and at the Oso Flaco Lake Trail.



Welcome to Oceano Dunes State Vehicular Recreation Area. Formerly known as Pismo Dunes SVRA, this geologically unique sand dune and beach area provides a scenic and exciting playground for off-highway enthusiasts from throughout the United States and abroad. One of eight OHV areas administered by the California Department of Parks and Recreation, Oceano Dunes also offers visitors other recreational opportunities such as swimming, surfing, hiking, surf fishing, nature study and camping. The staff at Oceano Dunes wishes you an enjoyable and safe stay.

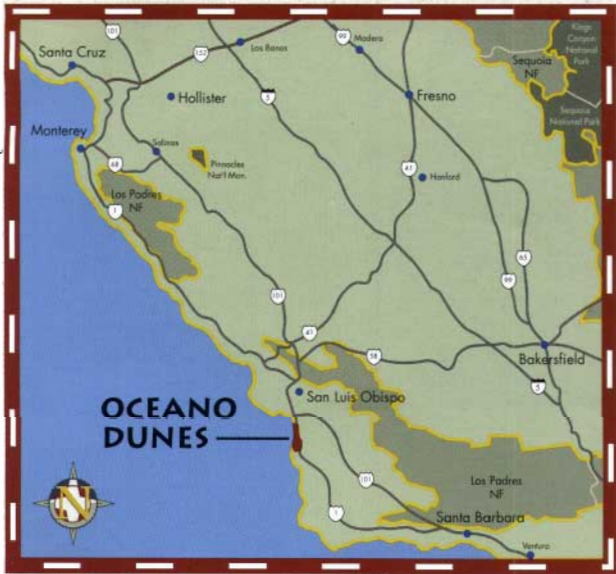
SAND DUNES

Oceano Dunes SVRA is located within the 15,000-acre Guadalupe-Nipomo Dunes complex, an area recognized by scientists, conservationists, and the public as the finest, most extensive coastal dunes remaining in California. Most of the sand that forms these dunes has been carried down to the ocean by rivers and streams, deposited on the beach by ocean currents, and then shaped by the wind into the dunes that we see and enjoy here today.

The prevailing ocean winds blow sand grains up to form dunes, wave-like crests of sand that run



north-south. On the west, or windward side of the dunes, the slope is gentle. On the east, or leeward side of the dunes, the slope is quite steep. Wind-blown sand grains tend to accumulate high on the dune crest, and then periodically slide down in thin tongues of sand to the dune base forming a near-vertical slope. For this reason the leeward slope is called a "slipface."



PAST INHABITANTS

The Chumash Indians have lived in this area for thousands of years. Their settlements were noted by the early Spanish maritime explorers who sailed up the California coast in the mid-1700's. The first Europeans to actually travel through the dunes were members of the Don Gaspar de Portola overland expedition of 1769. In September of that year, just after crossing the Santa Maria River, Portola's men killed "un oso flaco" - a skinny bear. The lake at the southern end of the park takes its name from this incident.

During the 1930's and 40's, the dunes were the home of a group of free thinking people including mystics, artists, writers, nudists, and hermits who identified themselves collectively as the "Dunites." The Dunites believed that Oceano Dunes was one of the centers of creative energy in California. Dunite Ella Young gave the Gaelic name Moy Mell to the area, meaning, "pasture of honey" or "where the spirits dwell".

VEGETATION AND WILDLIFE

The Oceano Dunes area is home to a surprisingly wide variety of plants and wildlife. Those who take the time to explore and observe will see an incredible array of wildflowers, the tracks of many small mammals and insects, a variety of small birds at the ocean's edge, and hawks, owls, pelicans, or gulls flying overhead.

FOR INFORMATION CONTACT:

Oceano Dunes
State Vehicular Recreation Area
576 Camino Mercado
Arroyo Grande, CA 93420
(805) 473-7223 (Recorded)
Reservations: (800) 444-7275
www.oceanodunes.com

California Department
of Parks and Recreation
OHMVR Division
P.O. Box 942896
Sacramento, CA 94296-0001
(916) 324-4442
www.calohv.ca.gov

Gray Davis, Governor
Rusty Areias, Director
Dave Widell, Deputy Director



Printed on Recycled Paper
© Copyright, July, 2000
By OHMVR. All rights reserved

OCEANO DUNES

Willetts, sandpipers, whimbrels, turkey vultures and California gulls are among those birds commonly seen on the beach. Loggerhead shrikes, Bewick wrens, Peregrine falcons and American kestrels are often sighted among the sand dunes.

Some native plants include the arroyo willow, coyote brush, sand verbena and bush lupine. European beach grass, introduced at the turn of the century in an effort to stabilize the dunes, is common in many areas.

The Nature Center at Pismo State Beach's Oceano Campground on Pier Avenue and the Dunes Center in nearby Guadalupe are great places to learn more about the natural history of the dunes.

In scattered locations throughout the park, and particularly at the southern end of the recreation area, native vegetation is planted by park staff and volunteers in an effort to rehabilitate and repair areas



vegetation is in sharp contrast to the bare sand and dunes common in the off-highway vehicle use area of the SVRA. A mile-long footbridge and planked boardwalk provide a unique trail experience across Oso Flaco Lake and through the dunes to a remote wild and scenic beach. Abundant wildflowers, including sand verbena, Hooker's evening primrose, and lupine, bloom trailside throughout the spring and summer. Birdwatchers delight in locating different species in the variety of habitats found in the area. Hundreds of waterfowl visit the lake daily during the winter months. The boardwalk takes you up close and personal to the lake's wildlife residents. The entire trail route is accessible to visitors with disabilities. Guided hikes are scheduled by The Dunes Center each week. Hike schedules are available at all entrance stations to the SVRA. The Oso Flaco Lake trailhead parking lot is located 3 miles west of Hwy 1 on Oso Flaco Lake Rd., about 10 miles south of Oceano.

damaged by past uncontrolled recreational use.

Dune plants break the force of the wind and help keep sand from blowing away. Vegetation also provides food and shelter for wildlife. Dune

vegetation is fragile, however, and is easily destroyed by vehicle traffic. Vegetated areas are generally closed to vehicular use, but there are some exceptions.

The heavily vegetated Boy Scout Camp area, for example, includes a corridor for OHV traffic. Closed areas are signed or fenced. When in doubt, stay on well established trails or courses.

Don't blaze trails through vegetation.

ENDANGERED SPECIES

Each year, between March 1st and September 30th, the endangered California least tern and the threatened western snowy plover nest on the open sands within the recreation area. The intentional or reckless disturbance, harming or killing of either of these species is prohibited by both federal and state law. They are sensitive to disturbance by humans and dogs. Wire mesh fencing (exclosures) are erected around nest sites to help protect these rare birds. Young chicks roam the beach, and travel back and forth from the surf line both day and night.

You can help ensure the survival of these species and protect your recreational opportunities by following these simple guidelines:

- Drive with care, obey the 15 mph speed limit, and give all birds the right of way.
- Don't drive near or enter the fenced exclosures, or hang towels or other items on the fences.
- Dogs must be kept on a leash and under control at all times.
- Dispose of trash properly to keep from attracting predators to the nesting area.
- Notify park staff or any sick or injured birds.

OSO FLACO LAKE NATURAL AREA

Oso Flaco Lake Natural Area's pedestrian access, fresh water lake, willow thickets, and dune scrub

THE OHV AREA

Post 2 is located one mile south of Pier Avenue and marks the beginning of the OHV recreation area. The 3-1/2 miles of beach between Post 2 and Post 8 and the 1,500 acres of open sand dunes are all available for OHV use. All OHVs must be transported south of Post 2 before off loading.

Fenced and signed areas are closed to vehicular use, either because the property is privately owned or the area contains sensitive plant or animal life.

CAMPING AND FACILITIES

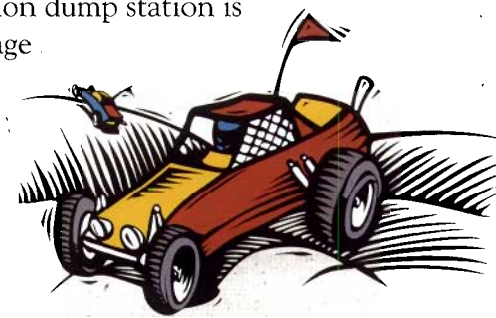
Camping is allowed south of Post 2 on the beach and in the open dune area. Chemical or vault toilets are provided. You must bring your own water. You are asked to haul your trash out. Campsite reservations may be made by calling 1-800-444-7275.

Campsites may be reserved during the period May 15 - November 30. Reservations may be made from 10 days to 6 months in advance. During the winter months campsites are available on a first come - first served basis.

The route along the beach to the camping area involves crossing the mouth of Arroyo Grande Creek. High tides, rain, blowing sand and your driving skill determine whether you can drive along the beach without getting stuck. Four-wheel drive vehicles are recommended. Access across Arroyo Grande Creek can be difficult at times. The creek level rises during winter storms and when water is released upstream from Lopez Dam. Timing your travel to coincide with low tide periods during the winter and spring months is advised.

A trailer sanitation dump station is located on Le Sage

Drive, 1/10 mile north of Grand Avenue on Highway 1, and is available free of charge for campers.



EMERGENCY SITUATIONS

In case of vehicle accidents or injuries, contact a ranger or the parks emergency dispatch center by telephone by dialing 911, or by contacting "ranger base" on CB radio channel 9. Emergency telephone call boxes are located near the beach at the entrance to Sand Highway and at Post 2.



OCEAN SAFETY

Dangerous swift moving ocean currents, called rip currents, are present along the beach at Oceano Dunes. Rip currents flow swiftly out to sea and are impossible for even the strongest swimmer to swim against. Rip currents are caused by the combination of wave action and the shape of the shoreline. If caught in a rip current, don't try to swim to shore against the current. Swim parallel to the shoreline until you are out of the current, then make your way to shore. Lifeguards are on duty during the summer months only.



GETTING UNSTUCK

If your vehicle becomes stuck, you might try the following:

- Drop your tire pressure on all 4 tires to about 15 - 18 psi.
- Dig out the sand from around your tires.
- Recruit some friends, and keeping the front wheels straight, push and drive your vehicle either forward or backward.

- Don't allow your wheels to spin. This will only dig you in deeper.

OHV "RULES OF THE ROAD"

- The speed limit is 15 MPH on the beach and within 50 feet of camps or people.
- California's Basic Speed Law applies in the dune area: Don't drive faster than is safe for existing conditions.
- The laws that pertain to driving under the influence of alcohol are the same for off-highway as on-highway. Don't drink and drive.
- Towing any object, other than a trailer or other motorized vehicle, is prohibited.
- Motor vehicles must stay out of vegetated areas.
- Each unlicensed OHV/ATV operator must be under the immediate supervision of a licensed adult and must be capable of operating all vehicle control mechanisms.
- Unlicensed OHV/ATV operators are prohibited from operating vehicles during nighttime hours or outside the designated OHV area.
- ATV operators under the age of 18 must be supervised by an adult.
- All ATV operators must wear an approved helmet.
- No passengers are allowed on 3 or 4 wheel ATV's.



Division 16.5 of the California Vehicle Code contains additional regulations pertaining to OHV equipment and use.



OHV REGISTRATION

All OHVs must be registered through the Department of Motor Vehicles. "Green Sticker" registered vehicles may operate year-round. In order to meet California's air quality standards, "Red Sticker" vehicles, which include most 2 stroke and many 4 stroke motorcycles manufactured after January 1997, may be only operated within Oceano Dunes between September 15 and May 15 each year. Funds generated from OHV registration are used for the acquisition, development and operation of OHV recreation areas.

OFF HIGHWAY VEHICLE USE can be an exciting, yet hazardous, adventure. You can minimize your chance of injury and maximize your enjoyment through common sense, intelligent vehicle operation and by extending courtesy and respect to others.